

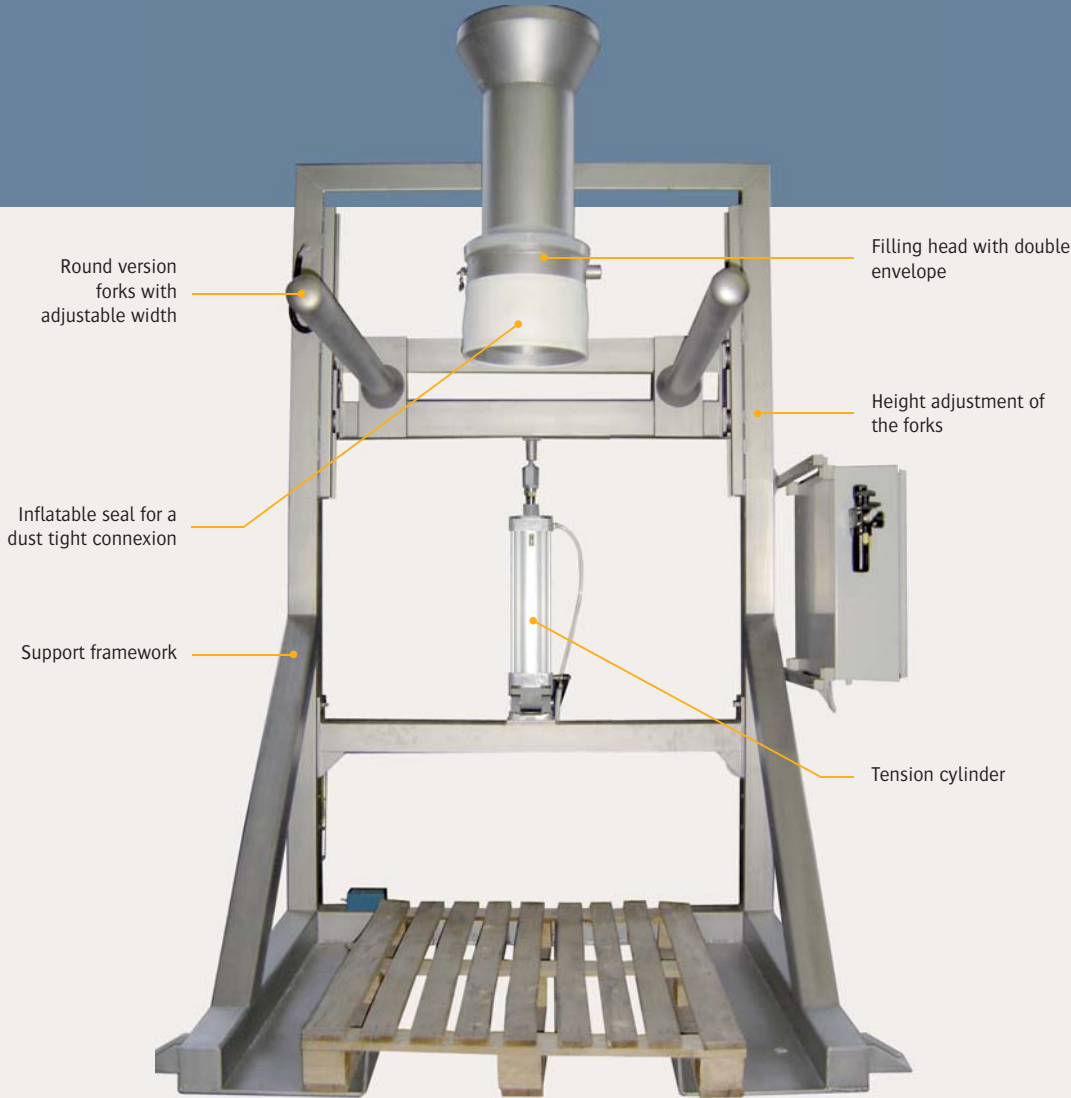
**Rate:** 10 to 20 big bags/hr.  
**Weight capacity:** 2 tons/big bag  
**Objectives:** ergonomic and dust containment

## TECHNICAL SPECIFICATIONS

**Flow rate:** 10 to 20 big bags/hr.  
**Manufacturing materials:** mild steel, SS 304L, SS 316L  
**Finishes:** RAL 9006, micro-blasted, electropolishing  
**Installed power:** 0.2 kW  
**Compressed air consumption:** 0.9 Nm<sup>3</sup>/hr.  
**Service pressure:** 6 bars  
**Input TOR:** 0  
**Output TOR:** 2  
**Dust collecting rate:** 300 m<sup>3</sup>/hr.  
**Maximum dimensions of big bags:**  
**Length x width x height:** 1,550 x 1,550 x 2,400 mm  
**"U" version forks:** allows big bag removal with straps (optional)

## OPERATING SEQUENCE

1. The big bag is placed on the filling station
2. The big bag inlet is connected to the filling head by an inflatable gasket ensuring the sealing
3. The height of the filling spout is adjusted by pneumatic cylinder according to the size of the big bag
4. Big bag filling process
5. Gradual lowering of the big bag with exhaust valve
6. Big bag laying on the pallet: bottom shaping (big bag stability during handling process)
7. When the big bag filling sequence is completed, the sealing gasket is deflated. The big bag is ready to be removed.
8. The big bag can be removed using either a forklift or a pallet truck



▶ **Hooking forks width adjustment** allows conditioning of all types of big bags



▶ **Inflating seal** to insure dust containment for a clean work area

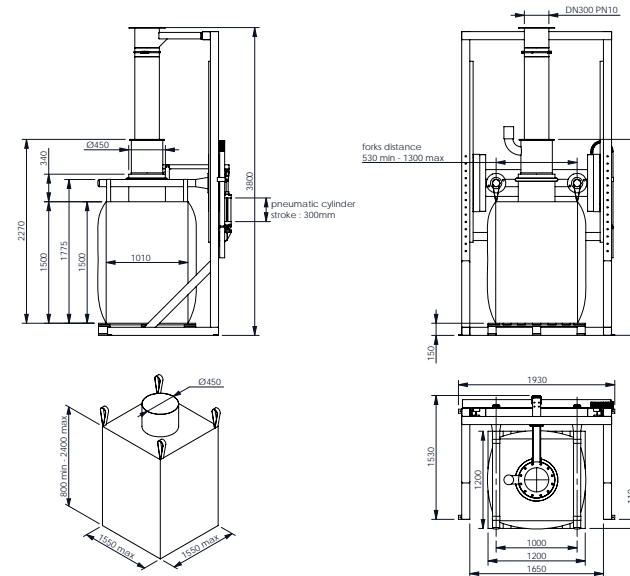


▶ **Tension cylinder** insures a perfect big bag filling and handling stability



▶ **Big bag removal** with fork or pallet truck

## Advantages



## Options



**Weighing system** integrated on big bag filling station



**Automatic big bag release**