

Bulk Bag Discharge Station

EasyFlow® High Flow Rate

AVAILABLE
CUSTOM
MADE

EasyFlow®
High Flow Rate

Automatic unloading

2 models :
EasyFlow® EF100 double electric hoist loading
EasyFlow® EF200 contained with compactor

Flow rates:
EF100: up to 30 bulk bags/hr.
EF200: up to 20 bulkbags/hr.

Weight capacity: 2 tons/bulk bag
Objectives: automatic cutting, containment and safety

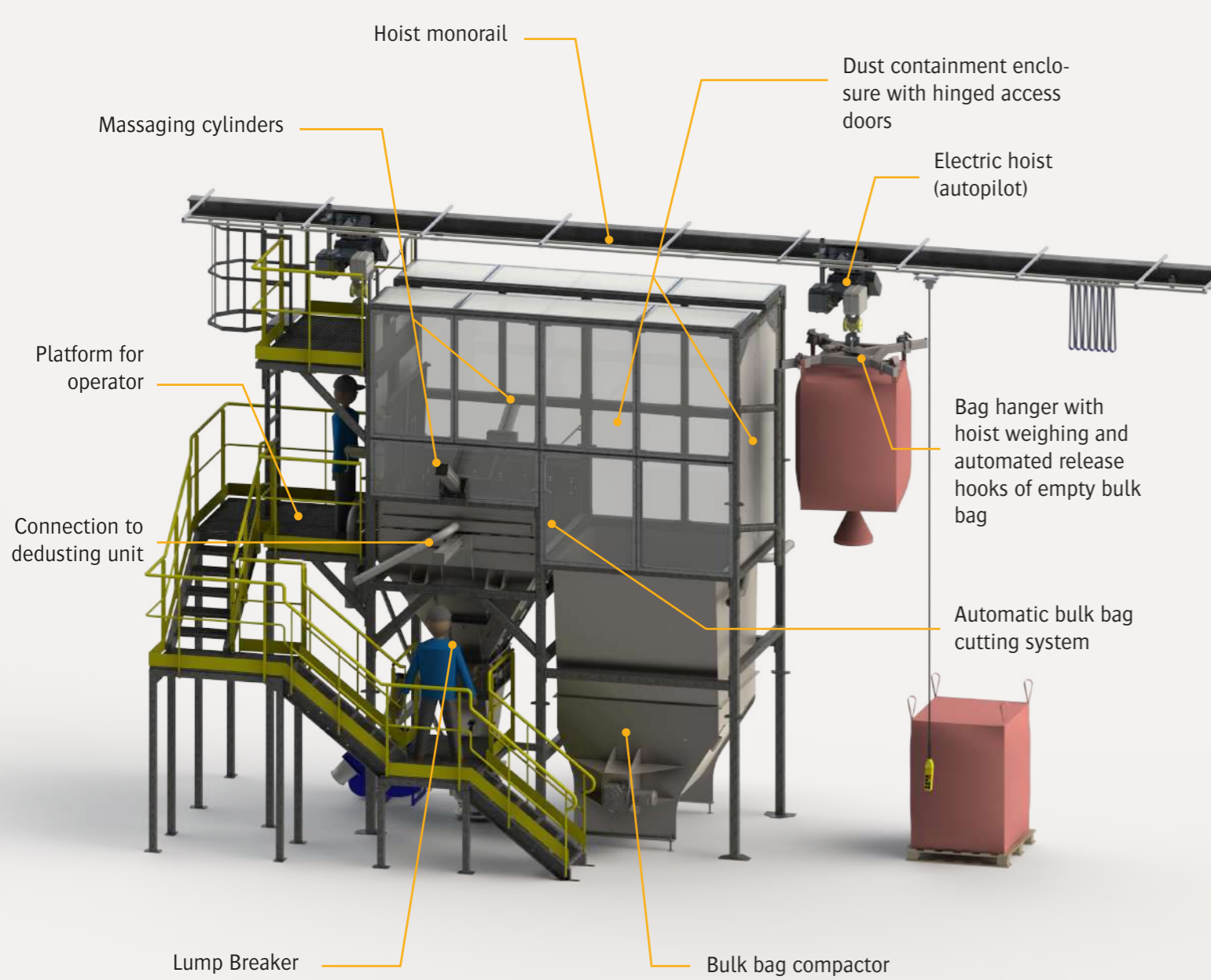
This FIBC unloading system enables the automatic emptying of bulk bags without operator intervention. The operations involving handling, cutting and evacuation of the bulk bags are autonomous. The only task required by the operator is the attachment of the bulk bag handles to the bag handling hanger.

TECHNICAL SPECIFICATIONS

Rate: 20 to 30 bulk bags/hr.
Manufacturing: mild steel, SS304L, SS316L
Finishes: RAL 9006, microblasted, electropolishing
Installed power: 5 kW (according to the option)
Operation pressure: 6 bars
Inlet: 4-20 mA
TOR inlet : 6
TOR outlet: 4
Dust collecting flow rate required: 1,766 CFM
*may vary according to the threated material
Maximum big bag dimensions
Length x Width x Height: 47.25" x 47.25" x 94.5"
Custom made models are also available

OPERATING SEQUENCE

1. Operator connects bulk bag to bag hanger
2. Bulk bag is transferred to discharge station via autopiloted hoist
3. Automatic cutting and emptying of the bulk bag
4. FIBC massage paddles assist in material flow (depending on options selected)
5. Bulk bag is transferred to waste bin and released (via automated hooks)
6. Empty bulk bag is compacted
7. Automatic control of the next bulk bag to be emptied via roller conveyor
8. Empty pallet is stored in pallet stacker (stacked pallets to be removed by forklift)



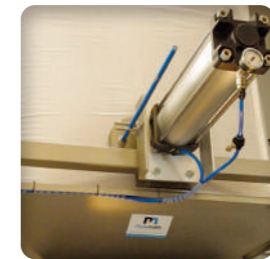
EasyFlow® EF200



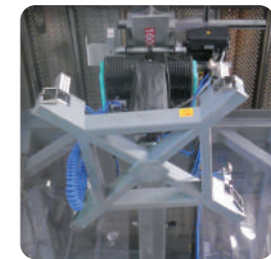
▶ **Automatic cutting:** Diamond, or U-shaped, spiked, or cutting discs. The cutting system is designed according to the type of bulk bag in order to facilitate automatic opening and avoid contamination by foreign bodies.



▶ **Integrated bulk bag compactor:** it permits to collect and compress all types of bags (paper, PE, woven plastic...) in an effective way and thus to remove the majority of dust.



▶ **Massage paddle:** piloted pneumatic cylinders to promote the flow of difficult materials.



▶ **Automatic loading:** steering of the hoist is controlled by the PLC and automatic weigh hooks.

Advantages



Bulk Bag Discharge Station

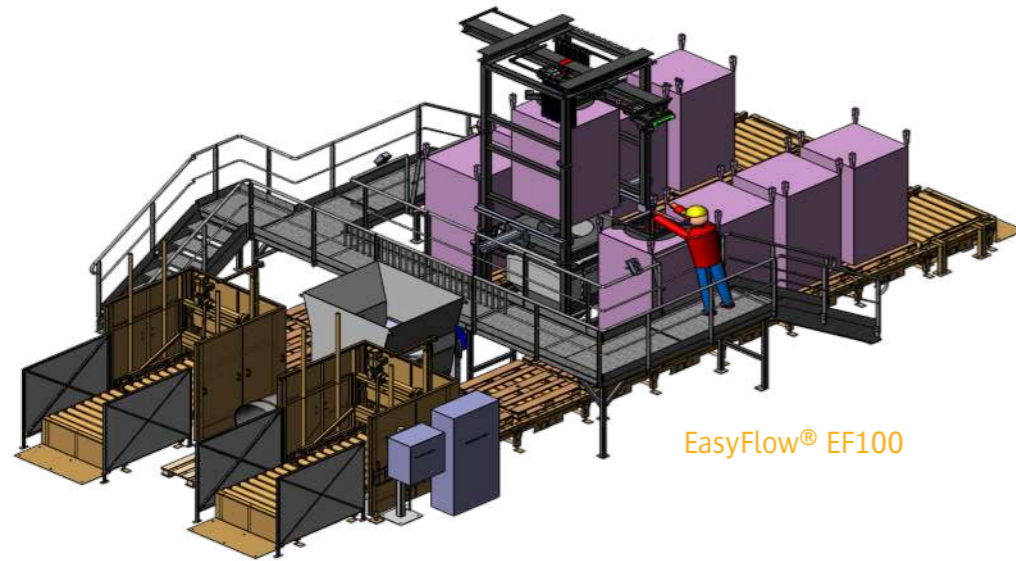
EasyFlow® High Flow Rate

AVAILABLE
CUSTOM
MADE

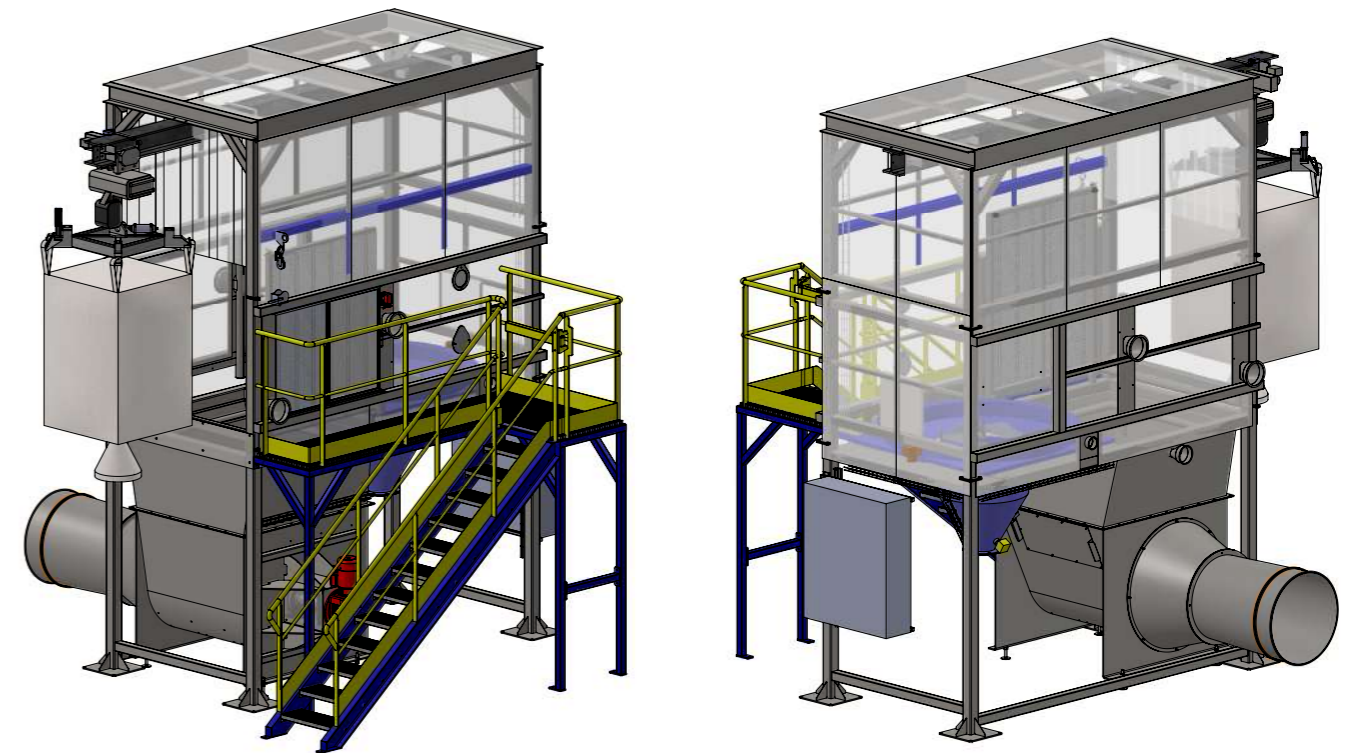
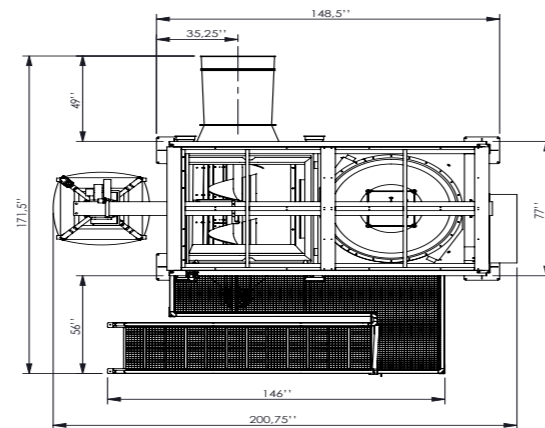
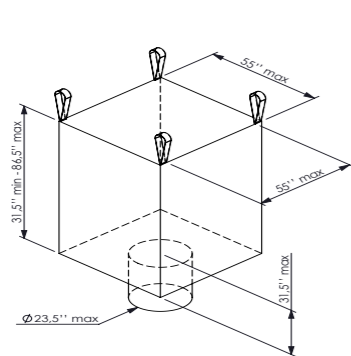
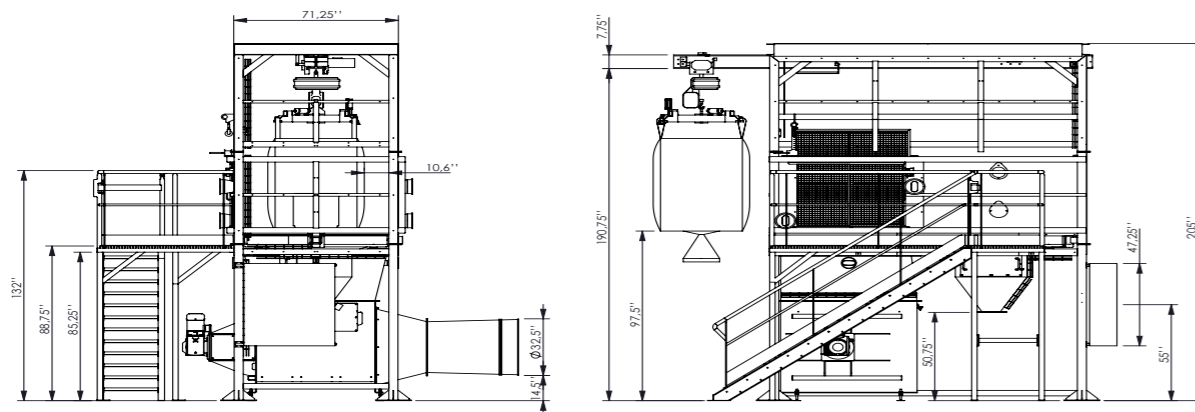
EasyFlow®
High Flow Rate

Automatic unloading

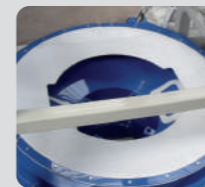
Rate: 20 to 30 bulk bags/hr.
Weight capacity: 2 tons/bulk bag
Objectives: automatic cutting, containment and safety



EasyFlow® EF100



Options



De-dusting ring: optimizes dust containment by creating a vacuum at the periphery of the bulk bag (pouyes ring). Positioned at the top and in the periphery of the bulk bag tray, the ring captures dust emissions during bulk bag unloading operations. This option is particularly suitable for volatile products (low density), or for installations where a high level of containment is needed. The recommend air flow is 1,060 CFM.



Granulator: the ideal solution for crushing materials that can form lumps. The granulator breaks up lumps of friable materials that form during the production process, transportation or storage phases. We offer 3 standard models of granulators (GR35, GR50, GR70) and 3 standard models of lump breakers (EC35, EC50, EC70). We also design customized solutions to suit all of your process requirements.