

**Rate:** 20 to 30 big bags/hr.  
**Weight capacity:** 2 tons/big bag  
**Objectives:** mobile station & connection to truck loading spout

## MOBILE FILLING UNIT FOR TRUCK CONNECTION OR SILO UNLOADING SPOUT

Palamatic Process has developed a complete range of bulk bag filling stations to meet various industrial demands. The FlowMatic® 07 model is the most flexible solution for the simple packaging of bulk materials under multiple feed points. It is particularly effective for material loading under silos, or feed points that require complete washdown.

## TECHNICAL SPECIFICATIONS

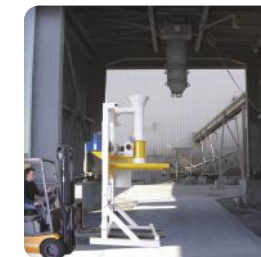
**Flow rate:** 20 to 30 big bags/hr.  
**Manufacturing materials:** mild steel, SS 304L, SS 316L  
**Finishes:** RAL 9006, micro-blasted, electropolishing  
**Installed power:** 2.2 HP  
**Average power consumption:** 0.2 HP  
**Compressed air consumption:** 0.9 Nm<sup>3</sup>/hr.  
**Service pressure:** 6 bars  
**Input 4 - 20 mA:** 1  
**Input TOR:** 2  
**Output TOR:** 6  
**Weighing precision:** ± 500 grams  
**Dust collecting rate:** 300 m<sup>3</sup>/hr.  
**Maximum dimensions of big bags:**  
**Length x width x height:** 61" x 61" x 94.5"  
**Round forks or « U » version** (to remove big bag with the straps)



Load cells for dosing and commercial weighing



Connection to the truck loading spout

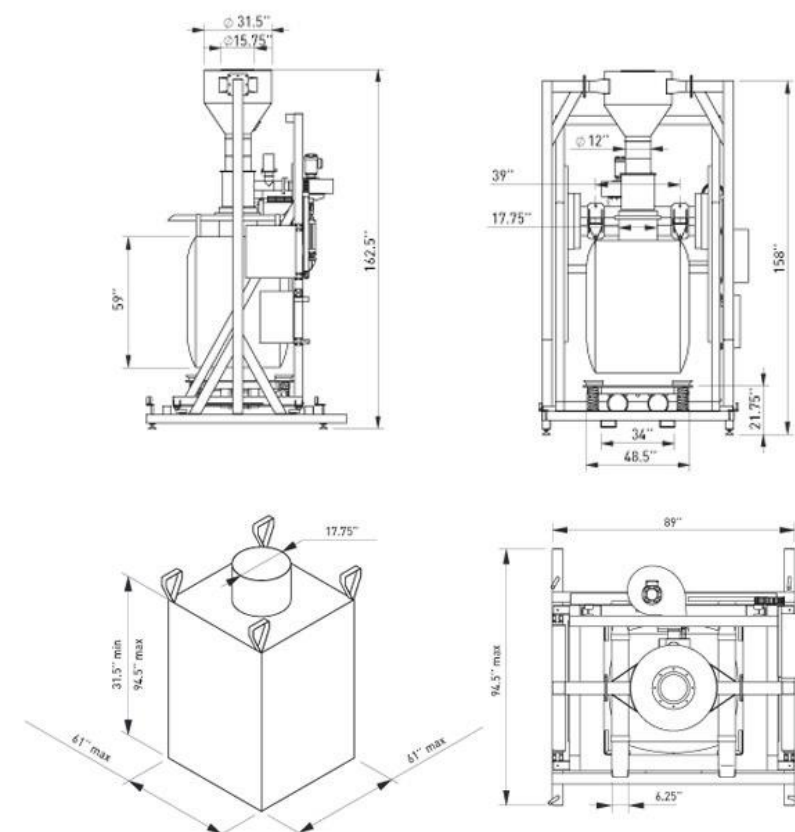


Unloading cone



Mobile station (wheels, forklift)

## Advantages



## Options



Automatic release



Clamping ring