

Butterfly Valve



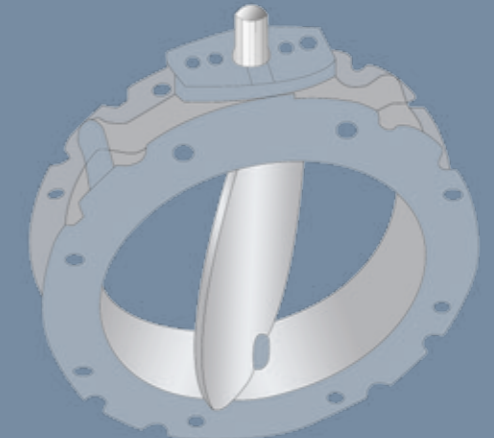
Manual, Pneumatic Actuator, Motoreductor

Objectives: discharge, sealing and closing

The butterfly valves are used to close tanks, hoppers and silos containing powder or granular materials. The butterfly valves are used in every installations needing to stop the materials flowing displaced by gravity or by pneumatic conveying.

TECHNICAL SPECIFICATIONS

Manufacturing: cast iron or stainless steel
Diameter: DN 100 to 400



▶ **Shaft for actuator:** manual; pneumatic; electric; option positioner 4-20 mA



▶ **Sealed closing at 6, 10, 16 bar**

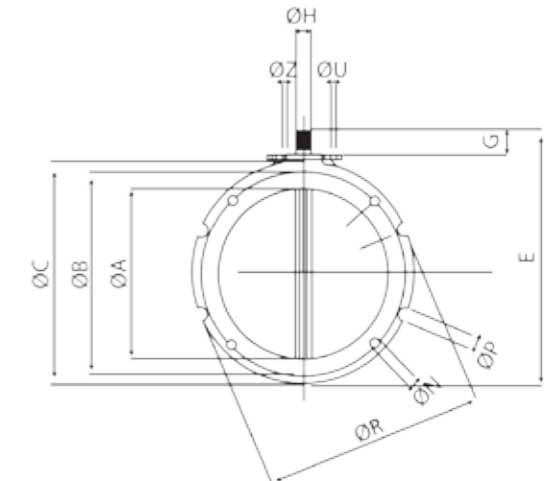
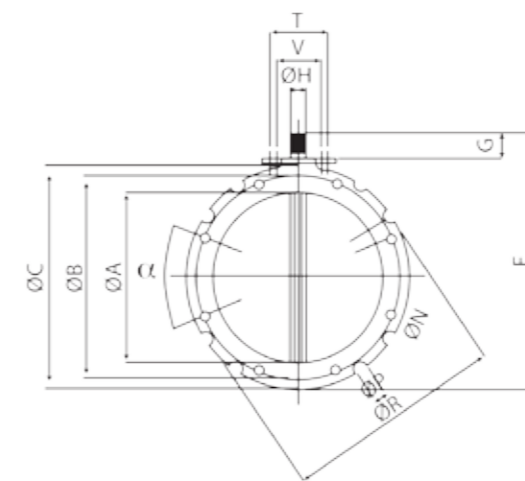


▶ **Profiled valve** for an optimized material flow



▶ **Flange connection PN or tri clamp** for pharmaceutical applications

Advantages

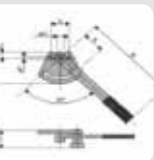


| Models | ØA | ØB | ØC | ØD | E | F | G | ØH | N (holes) | P (honing) | ØR | α | S | T | U | V | Z | Kg |
|---------|-----|-----|-----|-----|-----|-----|----|-------|-----------|------------|-----|--------|----|----|-----|----|-----|------|
| VPP 100 | 95 | 180 | 220 | 105 | 250 | 115 | 35 | 22x19 | N°4xØ14 | N°4xØ20 | 220 | 22°30' | 40 | 80 | M12 | 50 | M10 | 4 |
| VPP 150 | 150 | 200 | 228 | 163 | 290 | 115 | 35 | 22x19 | N°4xØ14 | N°4xØ14 | 228 | 22°30' | 40 | 80 | M12 | 50 | M10 | 5 |
| VPP 200 | 200 | 250 | 278 | 213 | 340 | 115 | 35 | 22x19 | N°4xØ14 | N°4xØ14 | 278 | 22°30' | 40 | 80 | M12 | 50 | M10 | 6.5 |
| VPP 250 | 250 | 300 | 328 | 236 | 390 | 115 | 35 | 22x19 | N°8xØ14 | N°8xØ20 | 325 | 11°15' | 40 | 80 | M12 | 50 | M10 | 7.5 |
| VPP 300 | 300 | 350 | 378 | 313 | 440 | 115 | 35 | 22x19 | N°8xØ14 | N°16xØ20 | 375 | 5°41' | 40 | 80 | M12 | 50 | M10 | 9 |
| VPP 350 | 350 | 400 | 440 | 363 | 530 | 123 | 50 | 28x25 | N°8xØ14 | N°8xØ20 | 440 | 10° | 40 | 80 | M12 | - | M10 | 16 |
| VPP 400 | 400 | 470 | 530 | 413 | 580 | 123 | 50 | 28x25 | N°8xØ14 | N°16xØ20 | 530 | 4°30' | 40 | 80 | M12 | - | M10 | 20.5 |

Options



Manual lever



Interchangeable actuators

See all the option in page 39

▶ PNEUMATIC ACTUATOR

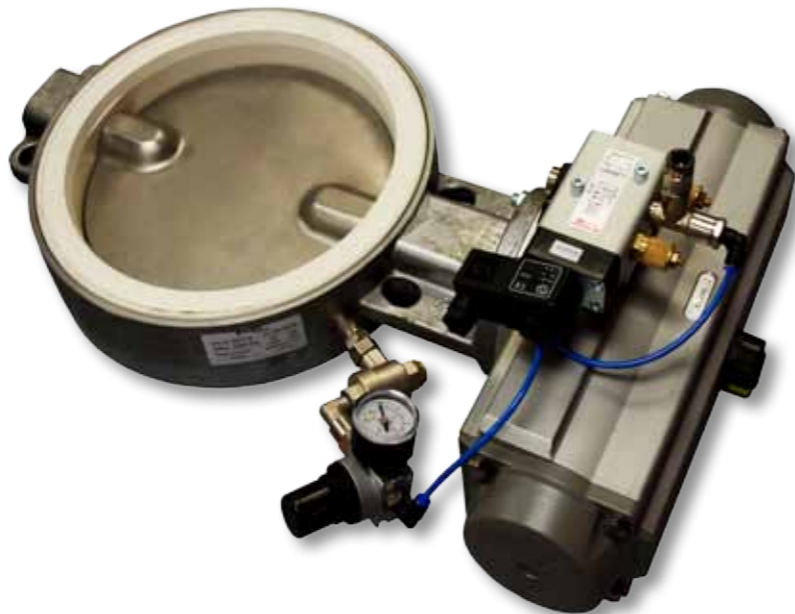
Motorized pneumatic valve operating mode:

- **Double acting:** a pneumatic cylinder, piston rack type, drives the valve shaft with a 1/4 turn movement. A distributor sends a pneumatic signal alternatively in one of the two cylinder chambers to open or close the valve.
- **Single acting:** the pneumatic cylinder is equipped with piston compression springs. The pneumatic signal executes only one of the two movements of opening and closing, the second one being operated by the springs pressure. This type of operating mode helps to provide a safety position in case of power failure.

▶ OPTION OF REINFORCED SEALING - Inflatable seat

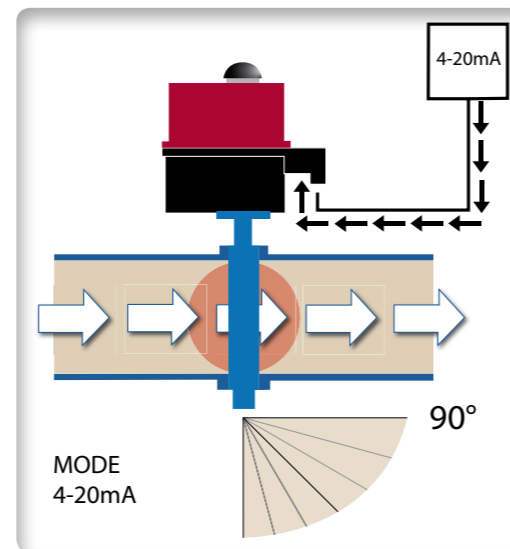
Some applications need significant sealing action under vacuum or pressure. The inflatable seat technology ensures this result.

The PALAMATIC PROCESS butterfly valves use air pressure to expand the seal against the discs, providing an even-distribution for a bubble tight seal. Since the seat makes only causal contact with the disc during valve opening and closing, there is minimal disc impingement. This is unlike conventional butterfly valves where disc impingement leads to shaving of the seat which decreases operational performance. This option increases the valve life and its efficiency.



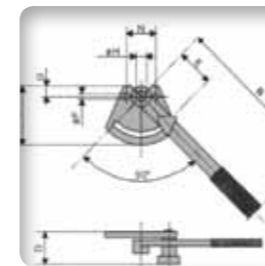
▶ OPTION OF POSITIONER TO FEED BY CONTROL SIGNAL 4-20 mA

The pneumatic actuator is set up with a controller for 4-20 mA which adjusts the opening angle of the butterfly. This technology feeds the material and regulates the flow.



▶ RESISTANCE TO CLEANING AGENTS

The design highly respects granular products.
The butterfly valves are resistant to aggressive cleaning agents and other chemical products.



▶ EXCHANGABLE ACTUATORS

For a sanitary using in food and pharmaceutical industries.
There are a variety of actuators by which the valve can be operated: manual, electric, single or double acting pneumatic actuator.



▶ HIGH TEMPERATURE RESISTANCE

Operating temperature up to 205°C.



▶ BFM FLEXIBLE CONNECTION

The quality of the stainless steel (316 L) and the valve disc enable food and pharmaceutical applications. EPDM, viton, rubber.



▶ FLANGE CONNECTION

Valve conception with flange.
Tri-clamp system for applications where the valve dismantling is important for the cleaning operations.



▶ 4-20 mA Dosing specificity.