

Rotary Valve



Diameter: DN 100 to 250
Objectives: discharging, sealing and closing

The rotary valve has been designed to respect rigorous sanitary requirements and enables a quick disassembly by the operator. The rotary valves are particularly suitable for pharmaceutical industries to stop or control the products flow. These valves guarantee a continuous powders and granulates feeding as well as an uniform dosing.

TECHNICAL SPECIFICATIONS

Distribution: DN 100 to 250
Finishes: stainless steel 316L
Actuator: pneumatic until 6 bars



▶ For a constant dosing and a flow control



▶ Double solution with full open disc and small rotary valve DN50 or 80



▶ Implementation on a sacks conditioning skid



▶ Tri-clamp flange for a quick mounting and removal of the valve

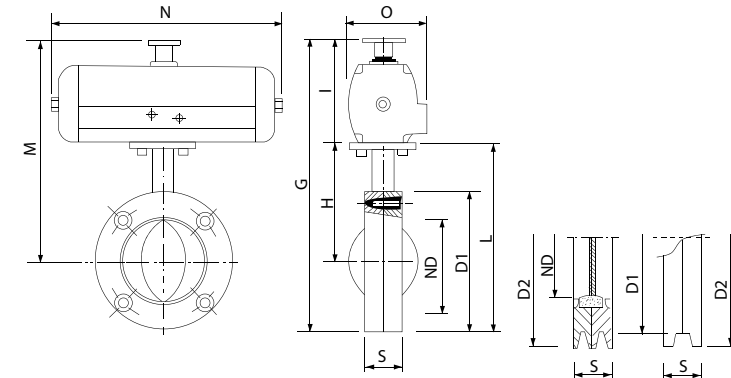
Advantages



The rotary valve has been designed to cut off and control the free-flowing products in pharmaceutical industries. They enable a continuous feeding of powders and granulates with a uniform dosing.

The valve is composed of two elements. The butterfly is adapted to execute a coarse dosing while the little rotor performs more accurate dosing. The maximum accuracy achievable is around ± 20 grams. The valve can be combined with dosing or weighing systems.

This double valve can be supplied with a rubber seal between the paddles and the rotor to make it suitable for applications where the pressure rises to 0.5 bar.



Models	D1	D2	S	G	H	I	L	M	N	O
DN 100	150	180	38	298	130	93	205	223	250	80
DN 150	200	230	38	348	155	93	255	248	250	80
DN 200	250	280	38	398	180	93	305	273	250	80
DN 250	306	330	40	488	213	122	366	335	310	105

