

Rotary Valve

Dust Collection



Capacity: 6 to 8.5 liters/revolution
Objectives: regulate and dose the conveyed materials

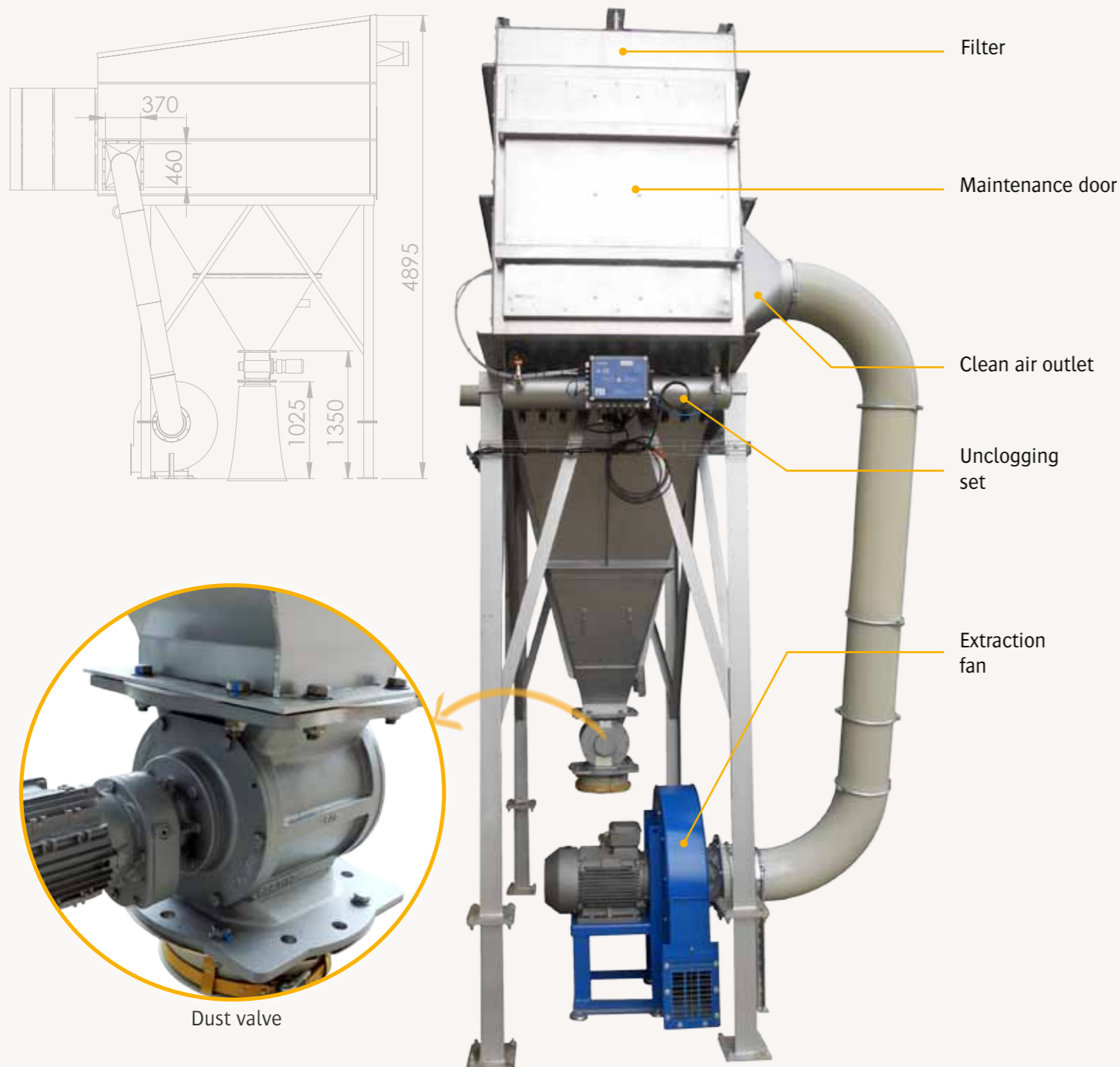
The PALAMATIC PROCESS dust lock valve has a dedicated design for filter applications. The standard inlet and outlet flanges are drilled in conformity with PN10 and are suitable for both round and square counter flanges. This rotary valve is suitable for simple and undemanding industrial applications, where its main function is to be an airlock.

TECHNICAL SPECIFICATIONS

Certifications: ATEX certified rotary valve for Zone 20 indoor and Zone 2 and 21 outdoor
Resistant: a pressure up to 10 bars
 ATEX 95 type for explosive atmospheres
Flange connection: DN200/250 (round/square)
Capacity: 6 to 8.5 liters per revolution
Pressure: differential pressure 0.5 bar
Shape of flanges: round or square, compliant with PN10/ DIN2576

OPERATING MODE

The rotary airlock valve has a large opening for the performance of the rotor with 6 flexibles vanes made of polyurethane and which are adjustable and interchangeable.
 The standard rotary airlock valve is adapted to materials handling the temperature up to 70°C and a maximum pressure difference of 0.5 bar.
 The stators of those rotary airlock valves have been tested at a hydraulic pressure of 20 bars, which is the equivalent of the resistance to the internal shocks of 10 bars.



Minimal air leakage



Flame proof certification ATEX 20-21-22

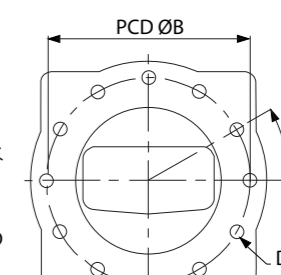
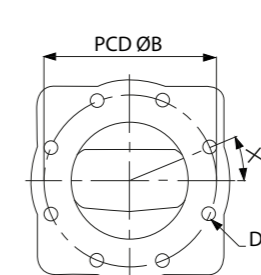
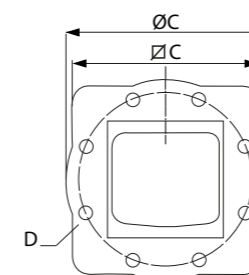
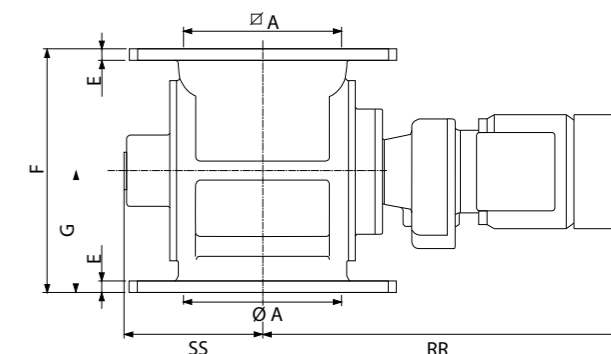


Flexible paddles manufactured in polyurethane



Standard flanges to make them suitable for PN10 round or square flanges

Advantages



Models	Litres / Tour	Inlet & Outlet	A	ØA	ØB	ØC	C	D	E	F	G	X	RR	SS
ERD 200	6	200	200	200	295	340	320	8xØ23	14	310	155	22.5°	465	176
ERD 250	8.5	250	250	250	350	406	370	12xØ23	15	325	162.5	30°	485	196