

GROUPE FIDEIP

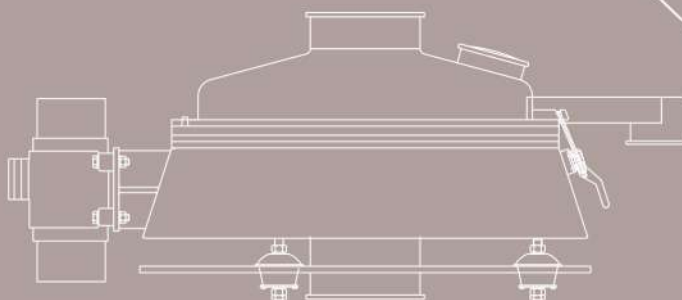


Palamatic

**MINERALS
& BUILDING
INDUSTRY
DIVISION**



*Bulk material & powder
handling solutions*





Plant of calcium carbonate

4 - Building Industry
& Minerals Division

6 - Factory & production line
designer

8 - Your project

- Turnkey solutions
- Engineering / Audit
- Exam ples of realisations

14 - Automation & electricity

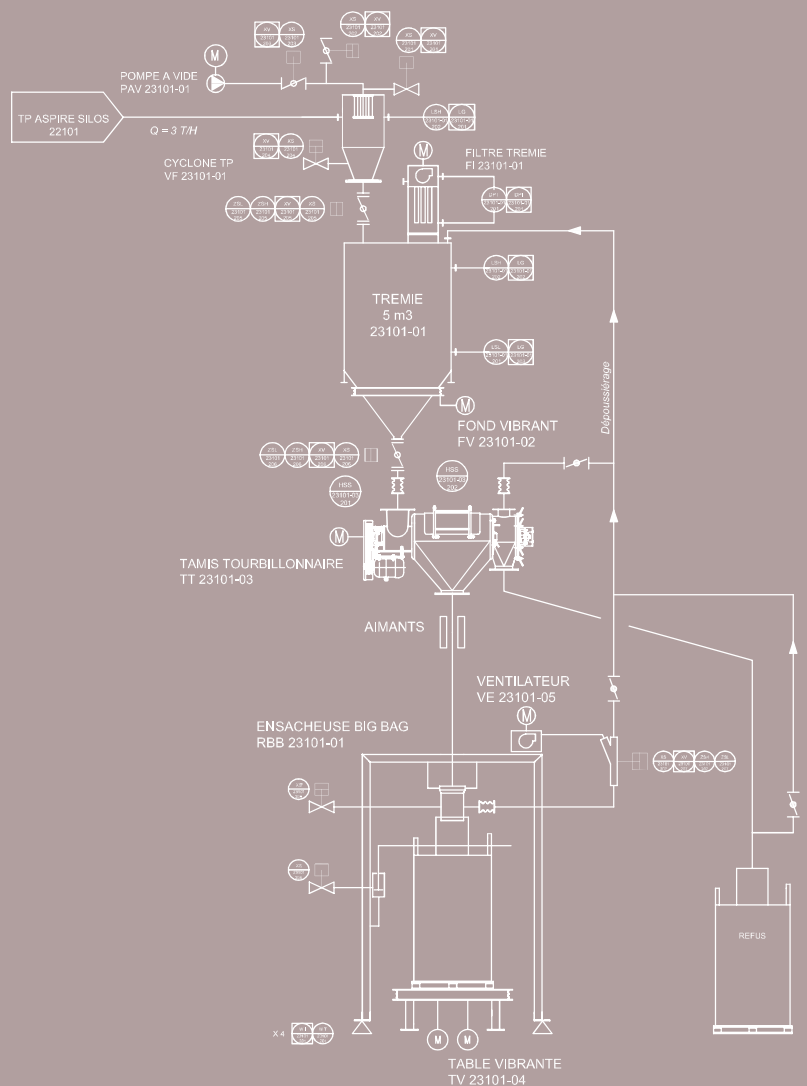
16 - Equipment

18 - Services

- Test plant
- Assembly
- Commissioning
- Customer services

22 - Atex and sectors

S U M M A R Y



EXPERTISE & TECHNOLOGY

Our clients are often faced with the relative competitiveness and requirements relating to the product quality. PALAMATIC PROCESS integrates into its production line designs equipment to meet the constraints of traceability, precision dosing, mixing quality and high production rates. From the reception of raw material to the packaging of «finished products», we guarantee an optimal process ensuring consistent quality of production and performance under control. Our innovative and high quality equipment is perfectly adapted to minerals processing and building industry. Our engineers master perfectly the problems of these sectors and define the ideal equipment with you.

PALAMATIC PROCESS ensures the success of your project.



Loading of granulates

RECOGNISED EXPERTISE

Optimal knowledge of the world of cement plants and quarries ensures you a high quality service and a technical solution adapted to your project. PALAMATIC PROCESS has recognized expertise in processing, extraction, crushing, grinding, dosing, mixing, homogenization or conveying of products such as lime, oxides of silica, alumina and iron.

The use of additives in the manufacture of concrete allows to assign it specific properties, especially for high performance concretes (technological innovations). The experience of PALAMATIC PROCESS engineers and the use of powerful softwares make it possible to design and implement these specific processes. PALAMATIC PROCESS offers a complete service from the process definition to its eventual commissioning.

Our many years of experience in various fields of activity allow us to offer you the benefits of inter-sector synergy.

Steps of cement manufacturing process example :

- extraction of raw materials
- grinding and storage of raw materials
- cooking of raw materials
- storage, crushing and screening
- packaging and transport

Pneumatic conveying of cement using our solutions allows maximum life span and the minimum of maintenance for your installation.



Factory for roof waterproofing products

MINERALS & BUILDING INDUSTRY DIVISION



- CEMENT PLANTS
- QUARRIES
- INDUSTRIAL PLASTER (BOARDS AND POWDERS)
- GLASS MANUFACTURING
- MINERALS AND METALS



FACTORIES & PRODUCTION LINES DESIGNER

Our engineering team and technicians are trained on different technologies and attentive to our customers in order to deliver adequate optimized installations with specifications that are imposed upon us.

Our conception is modelised in 3D with SolidWorks to give our customers the possibility of a better «in space» visualization of the design and integration proposals. Do not hesitate to contact us for your projects, be they new equipment integration in your production lines or full turnkey installations, we are at your disposal to draft a detailed technical proposal.

- PRODUCTION FEEDING
- TRANSFERRING
- SIFTING
- STORING
- DOSING
- MIXING
- PACKAGING
- AUTOMATING
- ASSEMBLY
- TRAINING



■ ALUMINUM ■ BENTONITE ■ BRONZE ■ MICA ■ CALCIUM CARBONATE
■ CEMENT ■ IRON ■ SILICON ■ NICKEL ■ ALUMINA ■ AEROSYL

Containers or pneumatic conveyor ?

Based on your production, our engineers select batch and continuous techniques.



Weighing, by-weight proportioning, additives, micro-ingredients or loads?

PALAMATIC PROCESS integrates the optimal solution by implementing volumetric, weight, or integrated dosing in-line on conveyors. Our many years of experience in the agri-food industry, chemical, pharmaceuticals, and animal nutrition allow us to offer you the benefits of this expertise.



2 APPROACHES TO ENSURE THE SUCCESS OF YOUR PROJECT

PROGRESS OF PROJECTS

- 1 DESIGN-ENGINEERING
- 2 PLANNING
- 3 MANUFACTURING -PRODUCTION
- 4 AUTOMATION & ELECTRICITY
- 5 ASSEMBLY
- 6 COMMISSIONING



Deconditioning mobile station





Multi outputs conveying screw for silo feeding

1

TURNKEY SYSTEMS

Your product is unique! PALAMATIC PROCESS integrates innovative optimal solutions with custom equipment defined by our highly skilled experienced engineers. With attentiveness, reflection, and projection, our sales engineers provide you, through on-site visits, personalized studies and recommendations based on your current and forecast production. The wide range of feeding, conveying, mixing, lump breaking and milling equipment mastered by PALAMATIC PROCESS and the possibility of conducting tests in our test plant guarantees the success of your project and your production line's reliability.

Project management

To meet your deadlines, we give importance to the establishment of a detailed schedule on MS Project

for each project. This planning stage guarantees a better visibility of project progress to meet the contractual delivery dates.

Upon receipt of order, PALAMATIC PROCESS edits a program and plans for approval. Scheduling is updated on a regular basis in order to meet contractual delivery dates.

Validation of equipment, as those of our designs or integrated equipment, forms the subject of a special undertaking in order to comply with the specifications.

Any subcontracting is also subject to qualification and strict control. All equipment and systems are subject to provisional acceptance. The technical folder is elaborated throughout the project to make it complete and ready for commissioning.



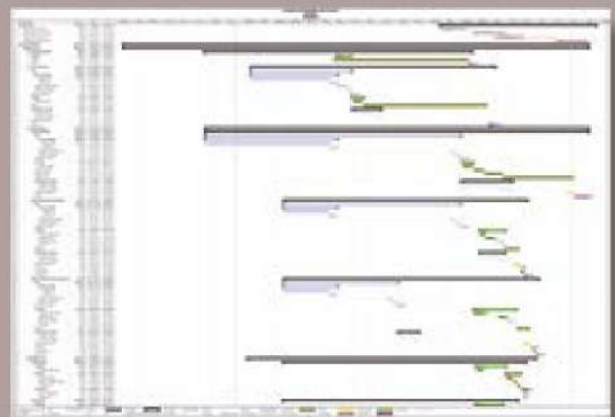
2

« ENGINEERING / AUDIT »

To better fulfill your needs, PALAMATIC PROCESS proposes advancing step by step. This approach corresponds to delegating a specialist engineer or team of engineers to your site at any stage in your project: simplified preliminary draft (SPD), detailed preliminary draft (DPD), detailed technical specifications (DTS), tender package (TP), construction monitoring... With this engineering configuration, PALAMATIC PROCESS is positioned as a catalyser for your project's progress.

Given our strong experience and the specific competence of our design engineers, you are ensured to get the best results regarding flow

management, production machine occupancy rate, equipment layout configurations, building volumes, standards and regulations (ATEX) and precise budgeting of your project.



MS Project planning



Solidworks software representation of conveying cyclofilter



Final realisation



Automatic big bag filling line

Storage and dissolution skid



EXAMPLES OF INSTALLATIONS



Automatic opening of sacks

▶ AUTOMATIC SACKS OPENING INSTALLATION



COMPANY AND FACTORY END PRODUCT : leading company in the manufacturing of plaster and plasterboards.

LOCATION : France

OBJECTIVE : to ensure the automatic opening of 25kg bags at high speed with minimal human operation.

PALAMATIC PROCESS EQUIPMENT :

- an automatic sack opening system Varislit® ensures a throughput of 8 sacks/ min.
- a vacuum lifter for sacks allows effortless loading by the line operators
- the Varislit 6000 allows unloading and compacting empty bags while ensuring the containment of the zone by a dedicated and integrated dust collecting system. The machine is designed according to ATEX Directives and integrates a reinforced frame and an explosion vent connected to the exterior of the building
- deconditioned plaster is transferred by dense phase pneumatic conveying

RESULTS OBTAINED : the introduction of the bags is now done ergonomically at a high rate in a clean environment.

The PALAMATIC PROCESS range of automatic sack opening machines consists of 6 standard models. This range meets all applications for bag opening whatever the production rates and the type of packaging used.





Storage



Bulk packaging

► STORAGE LINE FOR GRANULATES

CLIENT : national company specialized in the supply of granulates

LOCATION : North Africa Middle East

OBJECTIVES : the facility has to permit the transfer and storage of carbonate into silos.

The carbonate derived from the client's quarry follows a calcination, hydration and grinding treatment before being transferred to silos. Sorted by particle size, the material is oriented towards the suitable silo.

The bulk loading into trucks is assured by a double envelope loading spout using gravity.

Transfer rates are about 50 t./h.

PALAMATIC PROCESS PROCESS EQUIPMENT :

- the collecting screw conveyor permits the supply of the main bucket elevator
- a bucket elevator supplies granulates into two conveying screws through a set of bypass and pipings
- screws load the silos equipped with filters and fluidized bottoms
- truck loading spouts with shut off valve and balancing line allows the conditioning of the carbonate in trucks

PALAMATIC PROCESS INSTALLATION : turnkey installation and interface with the building's architect.

Operators were trained by PALAMATIC PROCESS to process line driving, production and maintenance.

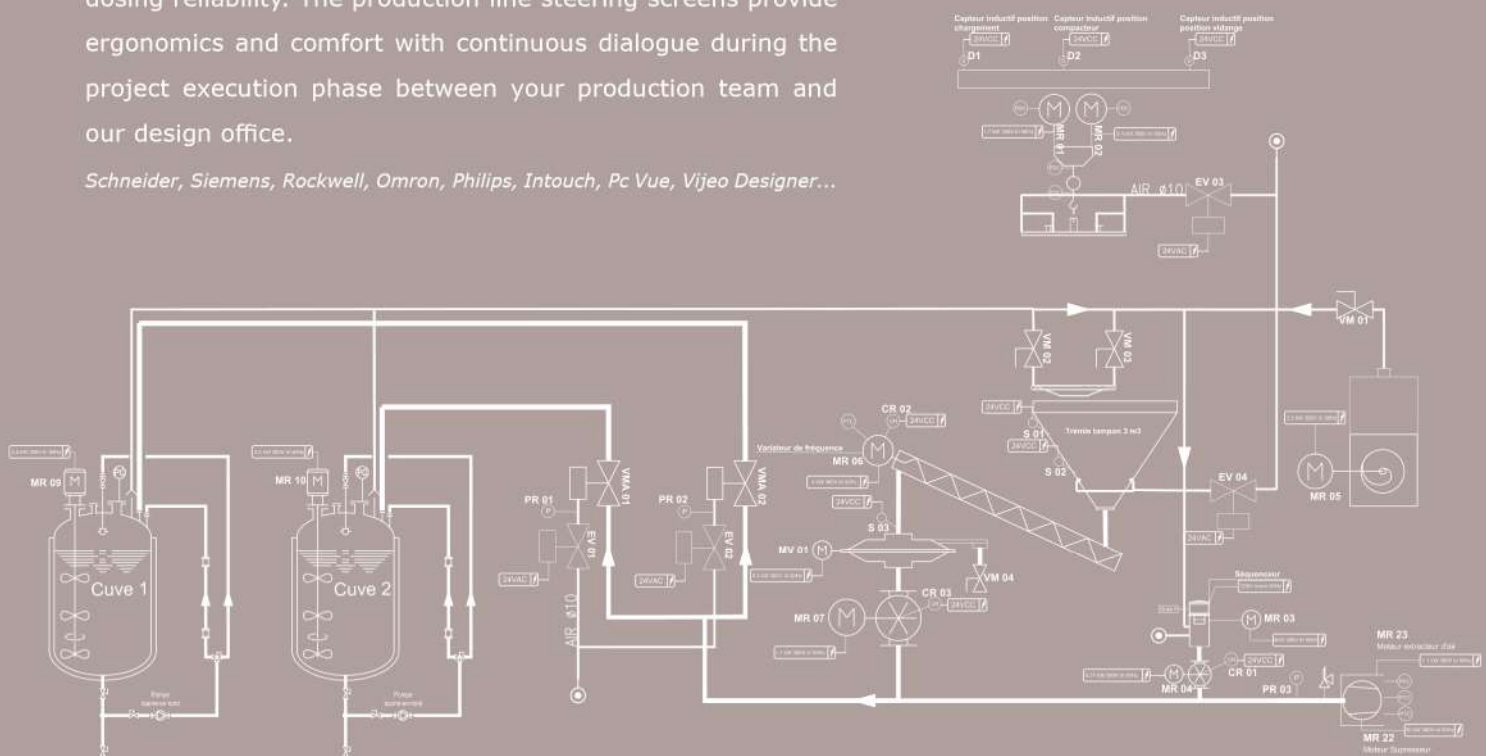
RESULTS OBTAINED : this outdoor installation ensures high production rates and guarantees a very high operating rate thanks to its robust design.



AUTOMATION & ELECTRICITY PAL'TOUCH® Technology

As a designer of complete production lines, PALAMATIC PROCESS associates ergonomically and visually programmed PLCs with its production units. Production monitoring is as important as the result. This is why PALAMATIC PROCESS's automation and computer engineers include fool-proofing in raw material inputs, lot traceability, operator identification and dosing reliability. The production line steering screens provide ergonomics and comfort with continuous dialogue during the project execution phase between your production team and our design office.

Schneider, Siemens, Rockwell, Omron, Philips, Intouch, Pc Vue, Vijeo Designer...





MINERALS & BUILDING INDUSTRY DIVISION



Dosing – microdosing – traceability – history – supervision

EQUIPMENT



UNLOADING

Big bag discharging system

To facilitate the flow and containment ensuring ergonomics and operator safety

Bag dump station

Bags opening, handling with manipulator, reduced size device

Automatic sack opening system

Automatic opening with respect for fragile products and high cadence deconditioning

FILLING

Truck loading spout

Efficient loading of powdered and granular materials into tankers or open trucks



MIXING

Mixer

Mixing 100% solid materials or incorporating liquids up to high viscosity



Cyclone

Vacuum transfer in dense phase for all types of powders without retention and with line purge



Hopper

Vacuum transfer system with integrated weighing system for introduction into melters



Cyclofilter

For receiving powder on pneumatic conveying line



AUTOMATING

Pal'Touch

Lot traceability, operator identification and dosing reliability... Production monitoring is as important as the result



DOSING

Trough and tubular screw conveyor

Mechanical conveying for pulverulent



Product feeding with pneumatic conveying

Weight or volume feeding for powders and granulates



Rotary valves

Gravity or blow through rotary valves for the dosing of powders and the feeding of pneumatic conveying



GRINDING

Blade grinder

Micronization of your powders, blades technology, pins and hammers



Granulator

Crushing of materials that tend to form clumps and ensure the fluidity of the product



Centrifugal sifter

Implementation of the sieve on a pneumatic conveying line



Vibratory sifter

Sieving for the protection of the line, elimination of agglomerates and foreign bodies



PRODUCTION FEEDING

Big bag filling station

Manual or automatic bagging unit for bulk and granular powders



Big bag packaging

Conditioning of all types of big bags in a contained manner with densification and commercial weighing



STORING

Silos / Hoppers

For storage of your powders and granules, steel, stainless steel or aluminum manufacturing and flexible silos



Stainless steel / steel container

For storage of your powders and granules, standard or customised models from 500 to 2500 l.

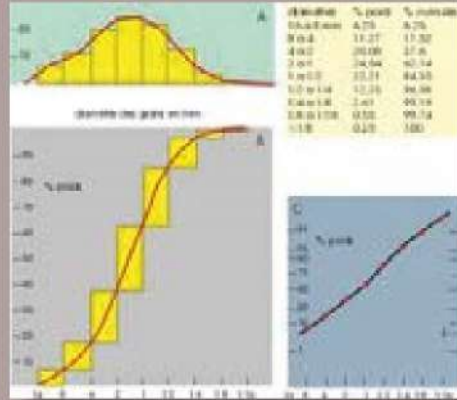


▶ TEST PLANT

Always with the aim to satisfy and provide you, the client with the best solutions for powders, PALAMATIC PROCESS can perform tests thanks to its in house **test centre and its demonstration equipment.**

- Pneumatic dense phase suction conveying
- Dosing
- Big bag unloading
- Milling
- Sifting

Thus, we validate the parameters required for your own products. This allows you to judge the performance of the PALAMATIC PROCESS equipment and secure your investment.



Granulometric curve





Palamatic Process workshop

▶ ASSEMBLY

We perform or supervise every step of your project from assembly to final commissioning. We can offer you a complete quality service with respect for your deadlines. The installation of our equipment in your premises is performed by our technicians anywhere in the world. The assembly of your production line includes handling, mechanical assembly, supporting piping and electrical wiring.

▶ COMMISSIONING

The commissioning stage provided by PALAMATIC PROCESS ensures the respect of your specifications. It includes :

- Final adjustments of the whole system by qualified personnel
- Checking of electrical connections
- Conducting of production tests

Training :

PALAMATIC PROCESS provides comprehensive training to ensure optimal use of your production line. All your production, line conducting and maintenance teams are trained throughout the start phase.

A comprehensive and customised technical start up documentation is supplied with every installation.



Plant installation





www.palamaticprocess.com/powder-machine/powder-mixer

► SERVICE

Customer services and maintenance on site

We guarantee after-sales service and quick delivery of spare parts and worn parts. Our service also proposes maintenance contracts adapted to your need.

PALAMATIC PROCESS after-sales service technicians move on site to provide the best solutions to your problems. Regular visits from one of our technicians guarantees operating efficiency and extends the life span of your installation.

Each of our technicians has received comprehensive technical training. Remote diagnostics are integrated into the automats for increased reactivity. PALAMATIC PROCESS uses teleservice systems allowing remote diagnosis and support in a short time even if the clients are located far away.



MINERALS & BUILDING INDUSTRY DIVISION



Deconditioning - Handling - Transferring

ATEX REGULATIONS



AUDIT AND COMPLIANCE

In your production processes, you are very frequently faced with the explosive nature of several materials like powder, gas or liquid. Explosions have huge consequences. When the atmosphere is explosive, a small spark (e.g. that of an electric switch or from the mechanical heating of a part of the machine) is enough to cause an accident or a disaster.

For many years, authorities and industries have worked on developing safety rules governing work conditions in such dangerous environments : explosive atmospheres. The new regulations, called ATEX regulations, were published and are effective as of the 1st of July, 2003.

PALAMATIC PROCESS provides its expertise to classify your risk zones based on the nature, frequency or duration of the presence of an ATEX regulation.

Today, PALAMATIC PROCESS delivers to its customers ATEX installations certified by notified organisms (Inéris, LCIE ...). PALAMATIC PROCESS has developed as a standard some equipment conforming to ATEX 0-20 / 1-21 / 2-22. Our engineers perform the zoning and drafting of risk analysis on new equipment and new facilities. PALAMATIC PROCESS ensures safe operation and full compliance with these standards.



Palamatic
PROCESS >>> machines • engineering
RUE DE LECOTAIS ZA DE LA CROIX ROUGE 35530 BRECE
+33(0)2 99 86 06 22
+33(0)2 99 86 08 10
sav@palamatic.fr
DESIGNATION : VIDE SACS
NUMERO DE SERIE : D 120 404 C
ANNEE DE FABRICATION : 2012
En conformité avec les exigences de la directive 94/9/CE
L'équipement ne doit pas être mis en service sans que la machine dans laquelle il est incorporée ait été déclarée en conformité avec la directive sur les machines 2006/42/CE

CE **Ex** ATEX II 2/3D T240°C
ATEX II 2/3G IIA T4
T amb. -10°C / +40°C

5 SECTORS

PALAMATIC PROCESS created five specific divisions to offer customers an efficient project team sensitised to constraints of these sectors.

FOOD & FEED

BABY FOOD ■ SPICES AND FLAVOURINGS
■ MILK DAIRIES ■ ANIMAL NUTRITION FOR LIVESTOCK ■ PETFOOD ■ MILLS ■ BAKERIES
■ SUGAR INDUSTRY ■ CONFECTIONERY ■ BEVERAGE AND JUICE MANUFACTURING ■ DIETARY SUPPLEMENTS ■ PRE-PREPARED MEALS



CHEMICAL INDUSTRY

PETROCHEMICALS ■ PLASTICS ■ PAINT
■ PIGMENTS AND DYES ■ PESTICIDES AND FERTILIZERS
■ PAPER PRODUCTION
■ TEXTILE MANUFACTURING



FINE CHEMICAL INDUSTRY

PHARMACEUTICALS ■ COSMETIC COMPOUNDS ■ BIOTECHNOLOGY
■ PRODUCTS A SEPTIC TREATMENT ■ DETERGENTS AND WASHING PRODUCTS
■ AROMAS



MINERALS & BUILDING INDUSTRY

CEMENT PLANTS ■ QUARRIES ■ INDUSTRIAL PLASTER (BOARDS AND POWDERS) ■ GLASS MANUFACTURING
■ MINERALS AND METALS



WASTE WATER & SMOKE TREATMENT

PREPARATION OF WHITWASH ■ DISSOLUTION OF UREA ■ TREATMENT OF ACTIVATED CARBON ■ ALUMINUM SULFATE TREATMENT ■ SLUDGE PROCESSING / TRANSFER / STORAGE / COOLING

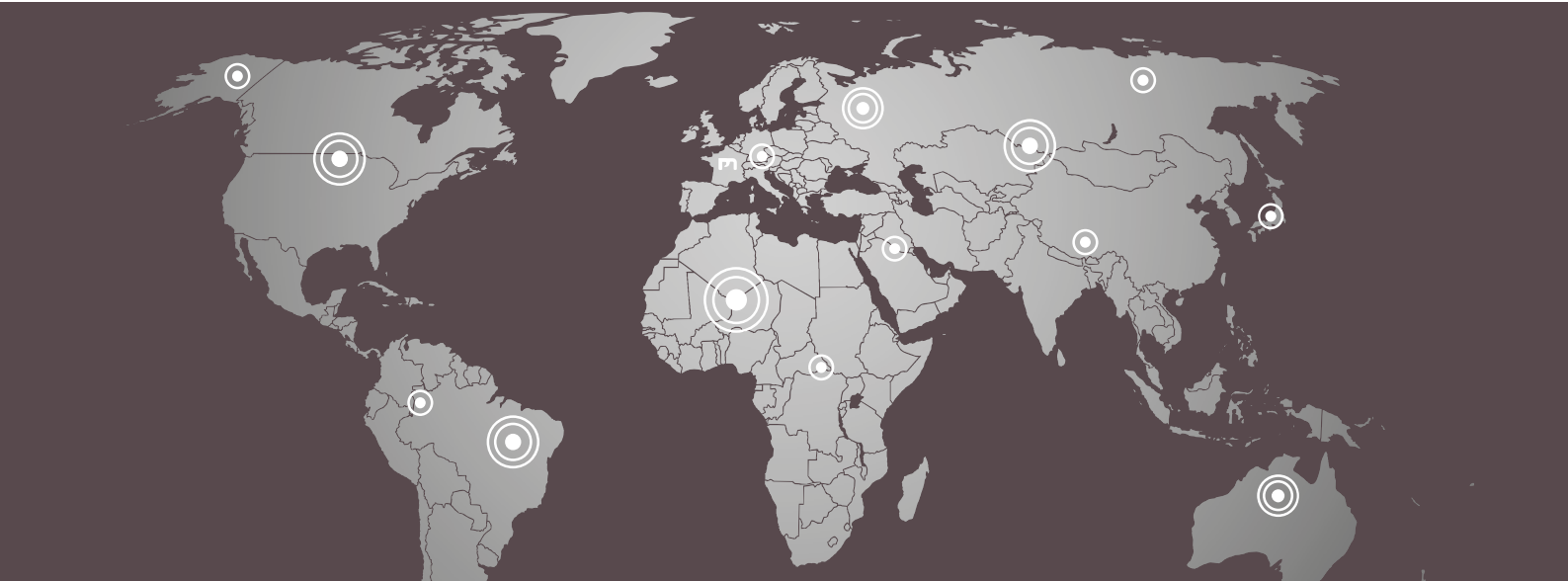




www.palamaticprocess.com



*Bulk material &
powder handling solutions*



contact@palamatic.fr
ZA La Croix Rouge • 35530 Brécé • France
Tél. : +33 (0) 2 99 86 06 22
Fax : +33 (0) 2 99 86 08 10

SAS au capital de 331 822 euros • R.C.S. Rennes B 384 894 093 • APE 4669B • N° T.V.A. : FR 14 384 894 093