

Vertical Mixer



Biorotor

Capacity: 1,000 to 5,000 litres
Objectives: efficient mixing at variable filling levels

MIXING SOLUTION FOR DRY, MOIST AND VISCOUS MATERIALS

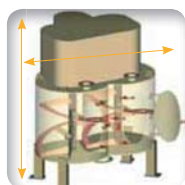
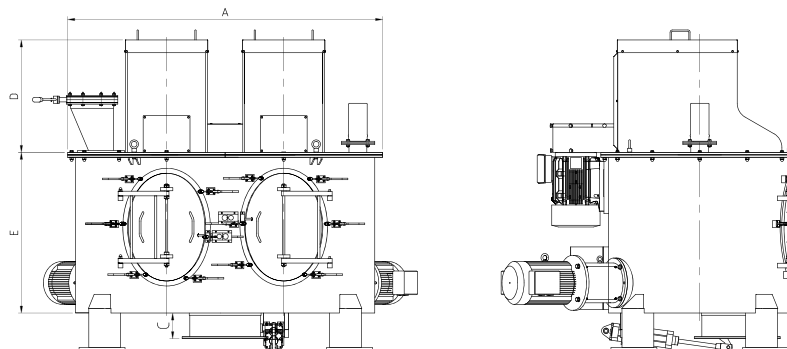
The double vertical shaft mixer offers a delicate treatment of dry, wet and sticky materials during mixing operations. The spiral blade of the vertical mixer activates a three-dimensional mixing of materials. This mixer can be used for dry powder, wet suspensions, liquid or pasty materials.

TECHNICAL SPECIFICATIONS

- Vertical move of the product
- Soft brewing of all the contents
- High quality mixing and short cycles
- Filling level from 10% to 100% of the volume
- Minimum space between the walls and belt to prevent any product agglomeration
- No retention, continuous movement of the materials to be mixed



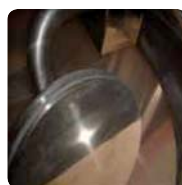
DIMENSIONS in mm



Compact size



External drive



Unloading valve



Large doors for maximal accessibility



Clean In Place (CIP)



Multiple materials inlets are possible



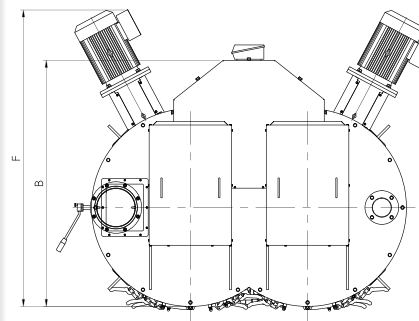
Polishing of welded components for hygienic finish



Can be installed on load cells for dosing

Advantages

By its design, this type of mixer does not have any bearing in the product. Only two bearings, located on the upper part, ensure the guiding of the mixing shafts.



Models	Mixing capacity (L)	A	B	C	D	E	Power kW
VTM 1000	1,000	1,780	1,610	145	450	990	11
VTM 1500	1,500	1,950	1,760	145	520	1,140	15
VTM 2000	2,000	2,170	1,960	145	620	1,280	22
VTM 2500	2,500	2,500	1,935	145	710	1,250	22
VTM 3000	3,000	2,500	1,940	145	710	1,415	30
VTM 4000	4,000	2,780	2,140	145	710	1,560	37
VTM 5000	5,000	3,040	2,260	145	710	1,680	45

Options



Load cells to inform the process about the amount of powder introduced



Inspection hatch