

# Conical Screw Mixer



**Capacity:** 50 to 5,000 litres  
**Objective:** sticky liquid mixture or wet, pasty or powdery materials

## DELICATE MIXING AND BLENDING, SIMULTANEOUS STORAGE OF MATERIALS

The CV mixer is a conical mixer with high mixing efficiency. It allows the delicate mixing of products, while ensuring the highest level of accuracy without deterioration. CV mixer is based on a three-dimensional action produced by an axis suspended from a rotating arm inside the conical tank combined with the rotation of the axis itself. This equipment is suitable for intermediate product storage, combined with temporary homogenization.

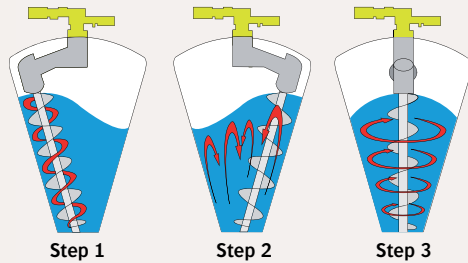
## TECHNICAL SPECIFICATIONS

- Mixing vessel made of steel, stainless steel 304L/316L
- Surface finish: satin finishing, polishing, blasting
- Manual cylinder or pneumatic actuator for knife gate valve
- Adjustable knife gate valve
- Adjustable flow
- Minimum residual material in case of complete emptying
- Possibility of a mobile mixer

## OPERATING MODE

Mixing is carried out by means of three separate actions:

- 1) Mixing screw, rotating on its axis, produces a lifting action of materials
- 2) At the same time, the screw turns in orbit around the vessel, removes the materials from the wall and directs them to the center of the vessel
- 3) The materials, detached by the screw, gravitate downwards and are mixed thoroughly with those lifted by the axis.



▶ The cleaning of this type of mixer is a significant asset for manufacturers carrying out frequent recipe changes



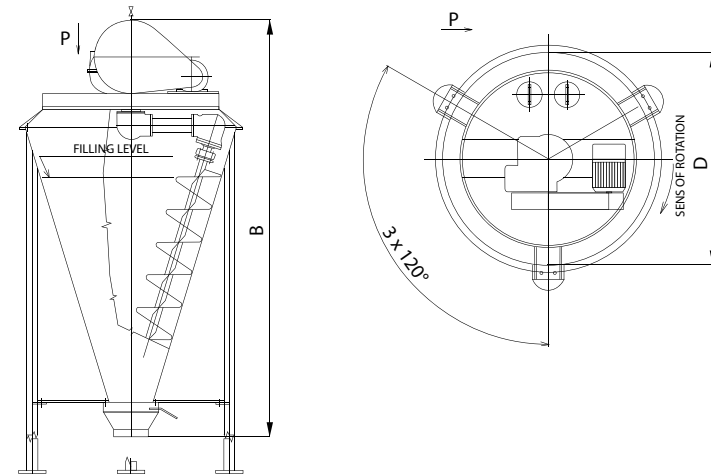
▶ Compact size      ▶ Mild mixing, respect of the materials      ▶ Minimum residual material      ▶ Low power consumption

## Advantages



## DIMENSIONS in mm.

Models	CV 50	CV 100	CV 200	CV 300	CV 600	CV 1000	CV 1500	CV 2000	CV 3000	CV 5000
<b>B</b>	1,222	1,372	2,200	2,400	2,714	3,054	3,410	3,650	4,110	4,805
<b>D</b>	730	822	1,130	1,300	1,492	1,560	1,753	1,936	2,180	2,950
<b>Weight</b>	250	300	550	600	650	700	800	900	1,000	5,000
<b>Net volume</b>	50	100	200	300	600	1,000	1,500	2,000	3,000	5,000
<b>Power kW</b>	0.75	1.1	2.2	3.0	3.0	3.0	4.0	4.0	5.5	11.0 + 0.75



## Options



Manual discharging valve



Access door

